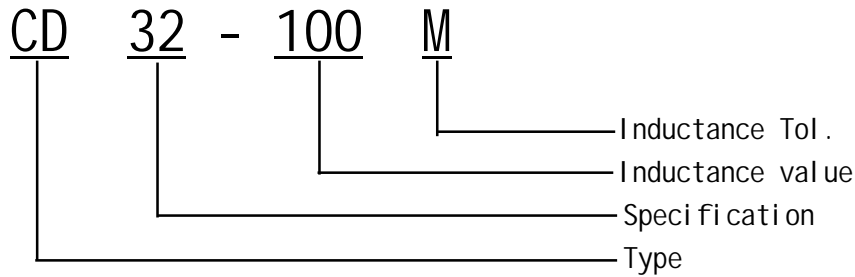


SMD Power Inductors CD32 Series

贴片功率电感CD32 系列

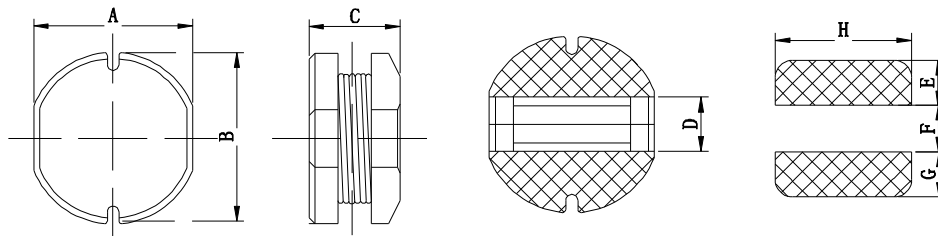
I .Ordering Code:



※ Inductance Tol. J: $\pm 5\%$, K: $\pm 10\%$, M: $\pm 20\%$, N: $\pm 30\%$.

※ Inductance value. 1R0: 1.0uH, 100: 10uH, 101: 100uH, 102: 1000uH.

II .Configuration&Dimensions: (mm)



Size	A	B	C(max)	D	E	F	G	H
CD32	3.00 \pm 0.30	3.50 \pm 0.30	2.40	1.00	1.30	0.90	1.30	3.50

III.Materials :

- a.Core: Ferrite DR core
- b.Wire: Enamelled copper wire
- c.Terminal: Cu/Sn
- d. Encapsulate: Epoxy novolac molding compound
- e. Remark: Products comply with RoHS' requirements

IV.General Specification :

- a.Storage temp. : -40 $^{\circ}$ C----+125 $^{\circ}$ C
- b.Operating : -40 $^{\circ}$ C----+105 $^{\circ}$ C
- c.Temp. rise : 40 $^{\circ}$ C Max. at rated current.

CD32 Series

Part No.	L (uH)	Test Freq .(KHZ)	Tolerance	D.C.R(Ω)	Rated Current
				MAX	(A)
CD32-1R0N	1.00	100K/0.25V	$\pm 30\%$	48.1m	2.00
CD32-1R8N	1.80	100K/0.25V	$\pm 30\%$	56.0m	1.80
CD32-2R2N	2.20	100K/0.25V	$\pm 30\%$	72.8m	1.40
CD32-2R7N	2.70	100K/0.25V	$\pm 30\%$	98.0m	1.30
CD32-3R3N	3.30	100K/0.25V	$\pm 30\%$	0.109	1.25
CD32-3R9N	3.9	100K/0.25V	$\pm 30\%$	0.148	1.20
CD32-4R7M	4.7	100K/0.25V	$\pm 20\%$	0.793	1.100
CD32-5R6M	5.6	100K/0.25V	$\pm 20\%$	0.192	0.900
CD32-6R8M	6.8	100K/0.25V	$\pm 20\%$	0.220	0.500
CD32-8R2M	8.2	100K/0.25V	$\pm 20\%$	0.247	0.800
CD32-100M	10.0	1.0K/0.25V	$\pm 20\%$	0.286	0.730
CD32-120M	12.0	1.0K/0.25V	$\pm 20\%$	0.325	0.620
CD32-150M	15.0	1.0K/0.25V	$\pm 20\%$	0.468	0.600
CD32-180M	18.0	1.0K/0.25V	$\pm 20\%$	0.546	0.530
CD32-220M	22.0	1.0K/0.25V	$\pm 20\%$	0.611	0.500
CD32-270M	27.0	1.0K/0.25V	$\pm 20\%$	0.680	0.420
CD32-330M	33.0	1.0K/0.25V	$\pm 20\%$	0.962	0.400
CD32-390M	39.0	1.0K/0.25V	$\pm 20\%$	1.050	0.360
CD32-470M	47.0	1.0K/0.25V	$\pm 20\%$	1.20	0.340
CD32-560M	56.0	1.0K/0.25V	$\pm 20\%$	1.53	0.320
CD32-680M	68.0	1.0K/0.25V	$\pm 20\%$	1.76	0.300
CD32-820M	82.0	1.0K/0.25V	$\pm 20\%$	2.39	0.280
CD32-101M	100.0	1.0K/0.25V	$\pm 20\%$	2.67	0.250
CD32-121M	120.0	1.0K/0.25V	$\pm 20\%$	3.72	0.200
CD32-151M	150.0	1.0K/0.25V	$\pm 20\%$	4.29	0.190
CD32-181M	180.0	1.0K/0.25V	$\pm 20\%$	4.81	0.170
CD32-221K	220.0	1.0K/0.25V	$\pm 10\%$	6.63	0.160
CD32-271K	270.0	1.0K/0.25V	$\pm 10\%$	7.80	0.130
CD32-331K	330.0	1.0K/0.25V	$\pm 10\%$	9.49	0.125
CD32-391K	390.0	1.0K/0.25V	$\pm 10\%$	10.53	0.120
CD32-471K	470.0	1.0K/0.25V	$\pm 10\%$	12.05	90.0m
CD32-561K	560.0	1.0K/0.25V	$\pm 10\%$	13.26	80.0m

VI. 额定电流 Reted Current:

电感值下降至初始值的10%或温度上升至40℃时的直流电流值中的最小值。(环境温度20℃)

This indicates the value of current when the inductance is 10% lower than its initial value at D.C. superposition or D.C. current when T=40℃ whichever is lower. (Ta=20℃)

VII. 无铅制品 Lead-free

VIII. 测试仪器 Test instrument : HP4284A, 502BC, CH1062A.